

ANNALS

OF THE SOUTH AFRICAN MUSEUM



CAPE TOWN

INSTRUCTIONS TO AUTHORS

1. MATERIAL should be original and not published elsewhere, in whole or in part. When accepted, copyright becomes the property of the Trustees of the South African Museum.

2. LAYOUT should be as follows:

- (a) *Masthead to consist of*
 Title: informative but concise, without abbreviations and not including the names of new genera or species
 Author's (s') name(s)
 Address(es) of author(s) (institution where work was carried out)
 Number of illustrations (figures, enumerated maps and tables, in this order)
- (b) *Abstract* of not more than 200 words, intelligible to the reader without reference to the text
- (c) *Table of contents* giving hierarchy of headings and subheadings
- (d) *Introduction*
- (e) *Subject-matter* of the paper, divided into sections to correspond with those given in table of contents
- (f) *Summary*, if paper is lengthy
- (g) *Acknowledgements*
- (h) *References*
- (i) *Abbreviations*, where these are numerous

3. MANUSCRIPT, to be submitted in triplicate, should be typewritten, double spaced with 2,5 cm margins all round. Tables and legends for illustrations should be typed separately, their positions indicated in the text. All pages should be numbered consecutively.

Major headings of the paper are centred capitals; first subheadings are shouldered small capitals; second subheadings are shouldered italics; third subheadings are indented, shouldered italics. Further subdivisions should be avoided, as also enumeration (never roman numerals) of headings and abbreviations.

Only generic and specific names should be underlined to indicate italics; all other marking up should be left to editor and publisher.

4. ILLUSTRATIONS should be reducible to a size not exceeding 12 × 18 cm (19 cm including legend); originals larger than 35 × 47 cm should not be submitted; photographs should be final size. A metric scale should appear with all illustrations, otherwise magnification or reduction should be given in the legend.

All illustrations, whether line drawings or photographs, should be termed figures (plates are not printed; half-tones will appear in their proper place in the text) and numbered in a single series. Items of composite figures should be designated by capital letters; lettering of figures is not set in type and should be in lower-case letters.

The number of the figure should be marked on the back of each illustration.

5. REFERENCES cited in text and synonymies should all be included in the list at the end of the paper, using the Harvard System (*ibid.*, *idem.*, *loc. cit.*, *op. cit.* are not acceptable):

(a) Author's name and year of publication given in text, e.g.:

- 'Smith (1969) describes ...'
- 'Smith (1969: 36, fig. 16) describes ...'
- 'As described (Smith 1969a, 1969b; Jones 1971) ...'
- 'As described (Haughton & Broom 1927) ...'
- 'As described (Haughton *et al.* 1927) ...'

Note: no comma separating name and year
 pagination indicated by colon, not p.
 names of joint authors connected by ampersand
et al. in text for more than two joint authors, but names of all authors given in list of references

(b) Full references at the end of the paper, arranged alphabetically by names, chronologically within each name, with suffixes *a*, *b*, etc. to the year for more than one paper by the same author in that year, e.g. Smith (1969a, 1969b) and not Smith (1969, 1969a).

For books give title in italics, edition, volume number, place of publication, publisher.

For journal article give title of article, title of journal in italics (abbreviated according to the *World list of scientific periodicals*. 4th ed. London: Butterworths, 1963), series in parentheses, volume number, part number (only if independently paged) in parentheses, pagination (first and last pages of article).

Examples (note capitalization and punctuation)

BULLOUGH, W. S. 1960. *Practical invertebrate anatomy*. 2nd ed. London: Macmillan.

FISCHER, P.-H. 1948. Données sur la résistance et de la vitalité des mollusques.—*J. Conch.*, Paris 88: 100–140.

FISCHER, P.-H., DUVAL, M. & RAFFY, A. 1933. Etudes sur les échanges respiratoires des littorines.—*Archs Zool. exp. gén.* 74: 627–634.

KOHN, A. J. 1960a. Ecological notes on *Conus* (Mollusca: Gastropoda) in the Trincomalee region of Ceylon.—*Ann. Mag. nat. Hist.* (13) 2: 309–320.

KOHN, A. J. 1960b. Spawning behaviour, egg masses and larval development in *Conus* from the Indian Ocean.—*Bull. Bingham oceanogr. Coll.* 17 (4): 1–51.

THIELE, J. 1910. Mollusca: B. Polyplacophora, Gastropoda marina, Bivalvia. In: SCHULTZE, L. *Zoologische und anthropologische Ergebnisse einer Forschungsreise im westlichen und zentralen Süd-Afrika* 4: 269–270.

Jena: Fischer.—*Denkschr. med.-naturw. Ges. Jena* 16: 269–270.

(continued inside back cover)

ANNALS OF THE SOUTH AFRICAN MUSEUM
ANNALE VAN DIE SUID-AFRIKAANSE MUSEUM

Volume 67 Band
October 1975 Oktober
Part 10 Deel



FIVE SPECIES OF *JAEROPSIS*
FROM THE SOUTHERN INDIAN OCEAN
(CRUSTACEA, ISOPODA, ASELLOTA)

By

BRIAN KENSLEY

Cape Town

Kaapstad

The ANNALS OF THE SOUTH AFRICAN MUSEUM

are issued in parts at irregular intervals as material
becomes available

Obtainable from the South African Museum, P.O. Box 61, Cape Town

Die ANNALE VAN DIE SUID-AFRIKAANSE MUSEUM

word uitgegee in dele op ongereelde tye na beskikbaarheid
van stof

Verkrygbaar van die Suid-Afrikaanse Museum, Posbus 61, Kaapstad

OUT OF PRINT/UIT DRUK

1, 2(1, 3, 5-8), 3(1-2, 4-5, t.-p.i.), 5(1-2, 5, 7-9),
6(1, t.-p.i.), 7(1-3), 8, 9(1-2), 10(1),
11(1-2, 5, 7, t.-p.i.), 15(5), 24(2), 27, 31(1-3), 33

Price of this part/Prys van hierdie deel
R1,85

Trustees of the South African Museum © Trustees van die Suid-Afrikaanse Museum
1975

ISBN 0 949940 76 3

Printed in South Africa by
The Rustica Press, Pty., Ltd.,
Court Road, Wynberg, Cape

In Suid-Afrika gedruk deur
Die Rustica-pers, Edms., Bpk.,
Courtweg, Wynberg, Kaap

FIVE SPECIES OF *JAEROPSIS* FROM THE SOUTHERN INDIAN OCEAN (CRUSTACEA, ISOPODA, ASELOTOTA)

By

BRIAN KENSLEY

South African Museum, Cape Town

(With 10 figures)

[MS accepted 10 March 1975]

ABSTRACT

Five species of *Jaeropsis* are figured and diagnosed. These include *J. waltervadi*, a new species from Walter's Shoal, and *J. beuroisi*, a new species from St Paul and Amsterdam Islands, as well as *J. paulensis* Vanhöffen from St Paul and Amsterdam Islands, and *J. curvicornis* (Nicolet) from Marion Island. The common intertidal South African species, which was previously misidentified, is given a new name, i.e. *J. stebbingi*.

CONTENTS

	PAGE
Introduction	367
Description of material	367
References	380

INTRODUCTION

Material of the genus *Jaeropsis* from the following sources necessitated this short report:

Two specimens from Walter's Shoal (33.13S, 43.51E) collected by the R/V *Anton Bruun* during the International Indian Ocean Expedition in 1964.

One specimen from Marion Island (46.53S, 37.52E) collected by the third South African Biological Expedition to the island in 1972-3.

Numerous specimens of two species from St Paul Island (38.44S, 77.30E) and Amsterdam Island (37.55S, 77.40E) collected by the French Expedition to these islands in 1970-2.

In addition, the species commonly found intertidally around both the west and east coasts of South Africa was found to be misidentified, and has been included in this report.

In the accompanying figures, dimensions are in millimetres.

DESCRIPTION OF MATERIAL

Family **Jaeropsidae**

Genus *Jaeropsis* Koehler

***Jaeropsis waltervadi* sp. n.**

Figs 1-2

Diagnosis

Cephalon dorsally broadly convex, with frontal plate anteriorly slightly concave, lateral margins smooth. Lateral margins of pleotelson bearing 7 small

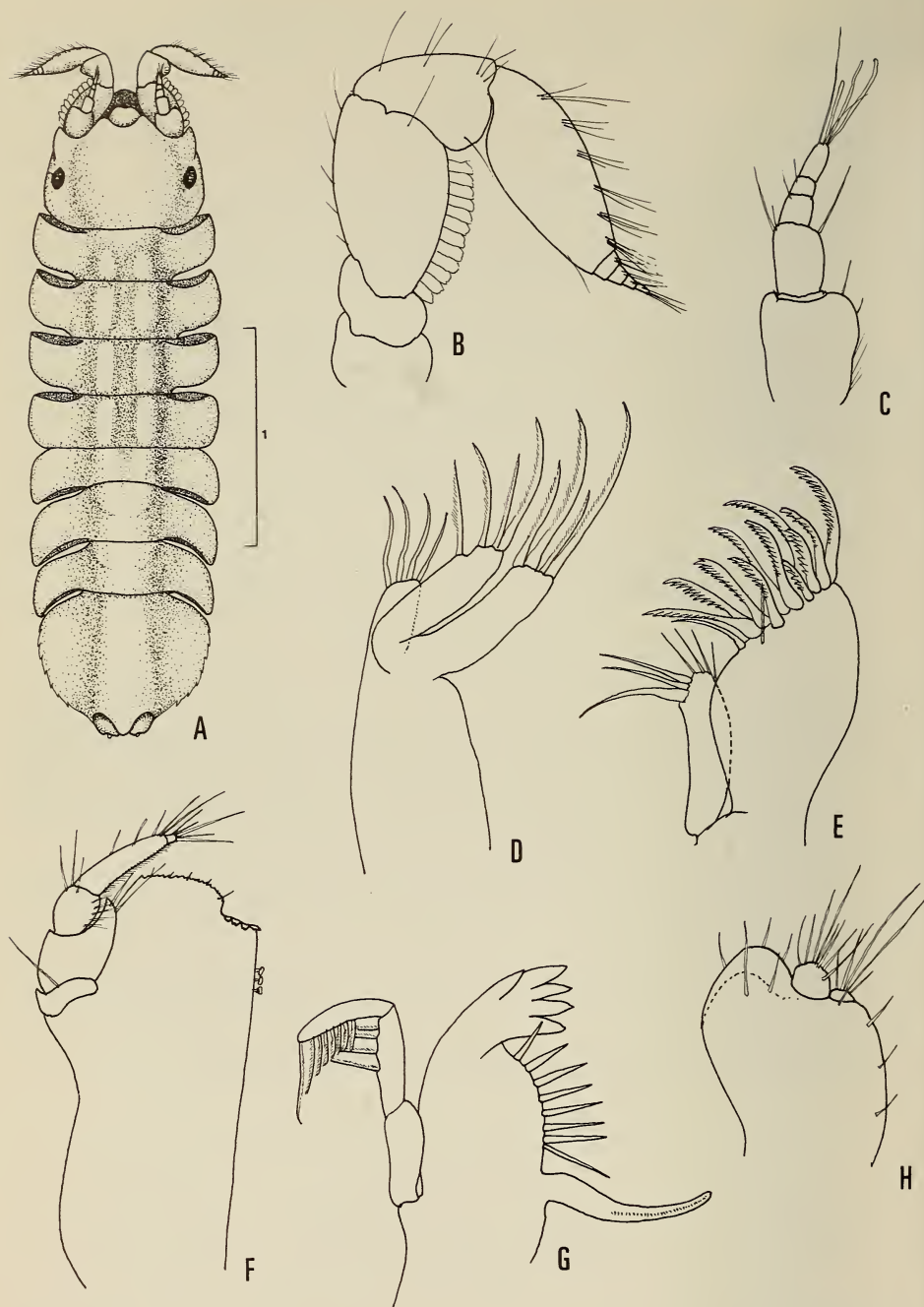


Fig. 1. *Jaeropsis waltervadi* sp. n.

A. Holotype in dorsal view. B. Antenna. C. Antennule. D. 2nd maxilla. E. 1st maxilla. F. Maxilliped. G. Mandible. H. Uropod.

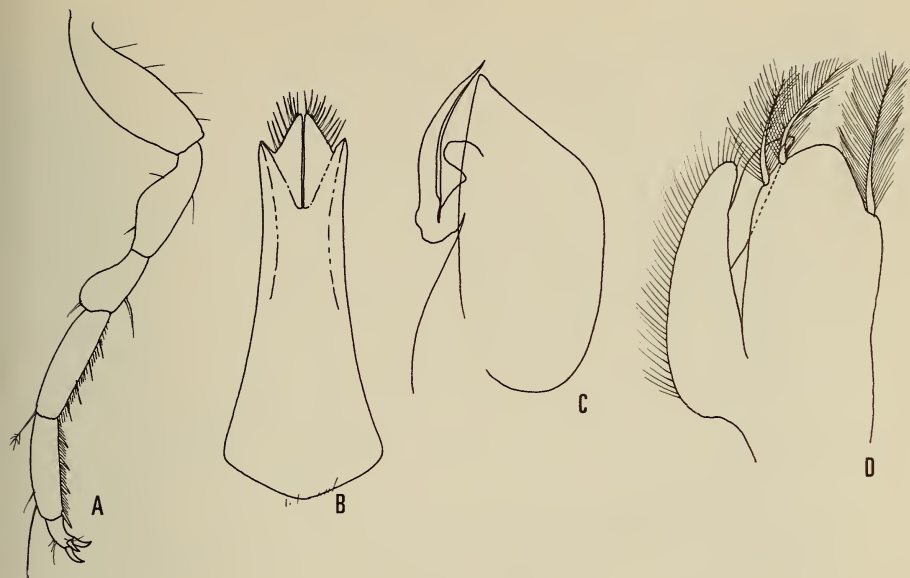


Fig. 2. *Jaeropsis waltervadi* sp. n.

A. VIIth pereopod. B. 1st pleopod, ♂. C. 2nd pleopod, ♂. D. 3rd pleopod, ♂.

denticulations. Uropodal basis about as long as broad, inner distal angle rounded, unarmed, hardly extending beyond narrowly rounded pleotelsonic apex. Body with broadly rounded median raised area on pleotelson and Vth to VIIth pereionial segments, becoming a double, more defined ridge on pereionial segments I to IV.

Material

Holotype SAM-A13646 ♂ 2,9 mm Walter's Shoal, 38–46 metres depth.

Paratype SAM-A13646 ♂ 2,4 mm Walter's Shoal, 38–46 metres depth.

Remarks

The median dorsal ridge, unarmed uropodal basis, and shape of the frontal plate of this species make it distinct from any previously described species of *Jaeropsis*.

Jaeropsis curvicornis (Nicolet)

Figs 3–4

Jaeropsis curvicornis (Nicolet), Menzies & Schultz, 1967: 174, figs 27–28 (complete synonymy).

non *J. curvicornis*: Barnard, 1914: 224; 1940: 494.

Diagnosis

Cephalon with frontal plate bearing small median point, lateral margins smooth. Lateral margins of pleotelson with single incision and stout seta. Uropodal basis longer than wide, with small hook on inner distal angle,

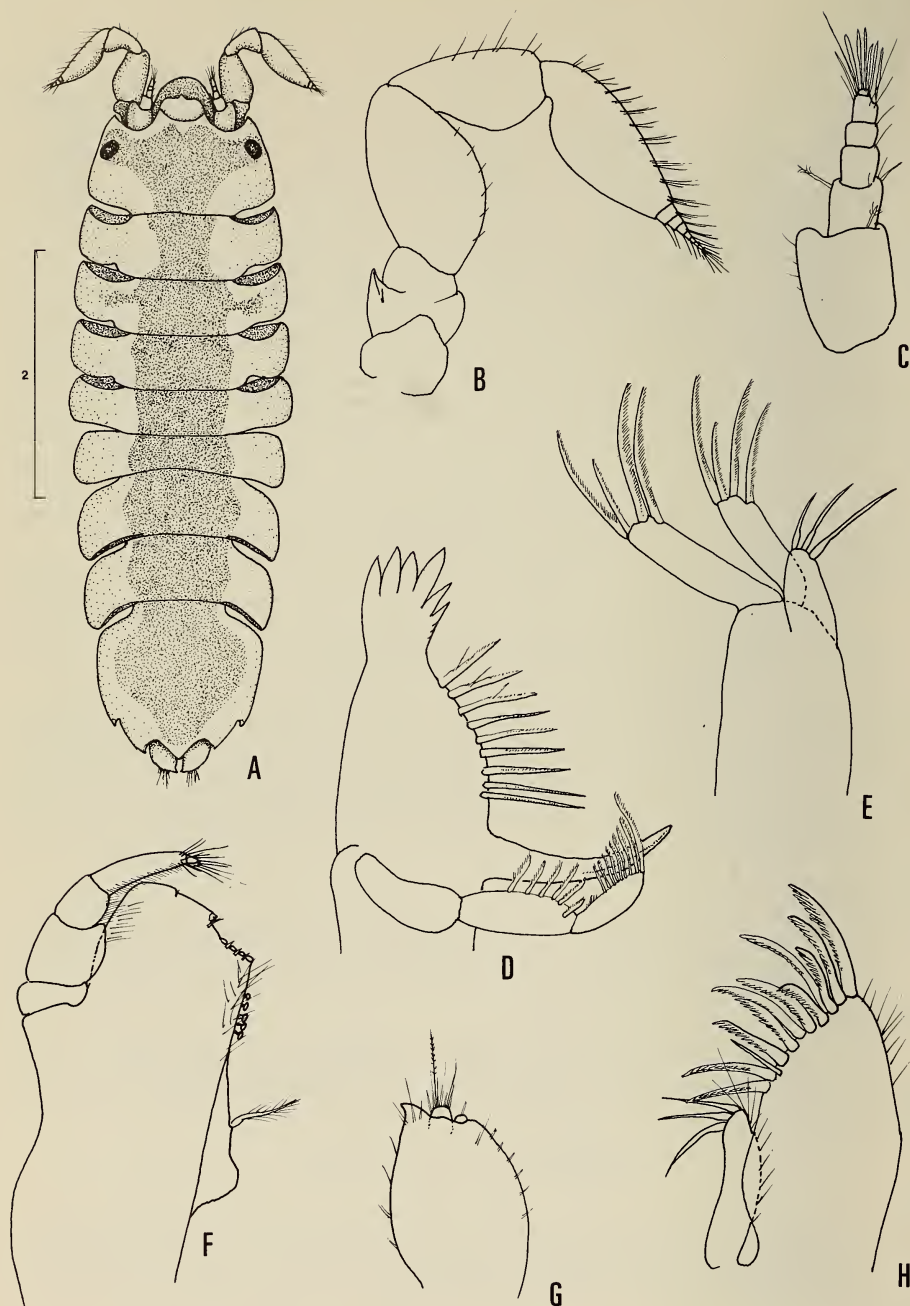


Fig. 3. *Jaeropsis curvicornis* (Nicolet)

A. ♂ in dorsal view. B. Antenna. C. Antennule. D. Mandible. E. 2nd maxilla.
F. Maxilliped. G. Uropod. H. 1st maxilla.

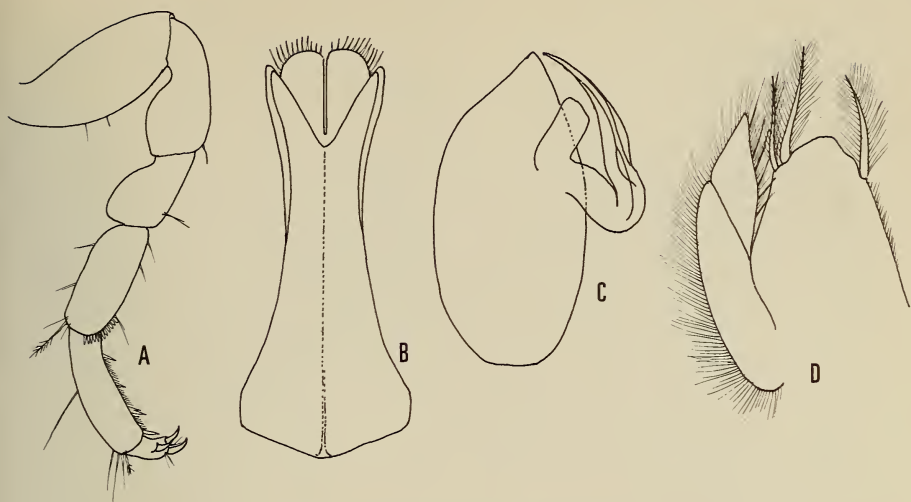


Fig. 4. *Jaeropsis curvicornis* (Nicolet)

A. VIIth peraeopod. B. 1st pleopod, ♂. C. 2nd pleopod, ♂. D. 3rd pleopod, ♂.

extending well beyond pleotelsonic apex. Body bearing broad band of red-brown pigment dorsally, expanded on cephalon to include eyes, also somewhat expanded on pleotelson.

Material

SAM-A13647 ♂ 5.0 mm Marion Island.

Distribution

Patagonia, Falkland Islands, Macquarie Island, Chile, Magellan Straits, Fuegian Archipelago.

Remarks

The colour pattern of the present specimen agrees well with that given by Richardson (1909) for *J. patagoniensis* (= *J. curvicornis*). Slight differences in the mouthparts are apparent between the present specimen and the description given by Menzies & Schultz (1967). The Marion Island specimen has nine serrated spines on the mandible (13 in the Antarctic specimens) and five fringed setae on the middle segment of the mandibular palp (as opposed to eight). For the rest, the specimen agrees well with the figures in the abovementioned descriptions.

Jaeropsis paulensis Vanhöffen

Figs 5-6

Jaeropsis paulensis Vanhöffen, 1914: 531, fig. 59a-1. Barnard, 1965: 201, fig. 2b.

Diagnosis

Cephalon with frontal plate rounded, medially entire, lateral margins entire. Lateral margins of pleotelson entire, fringed with alternating long and short

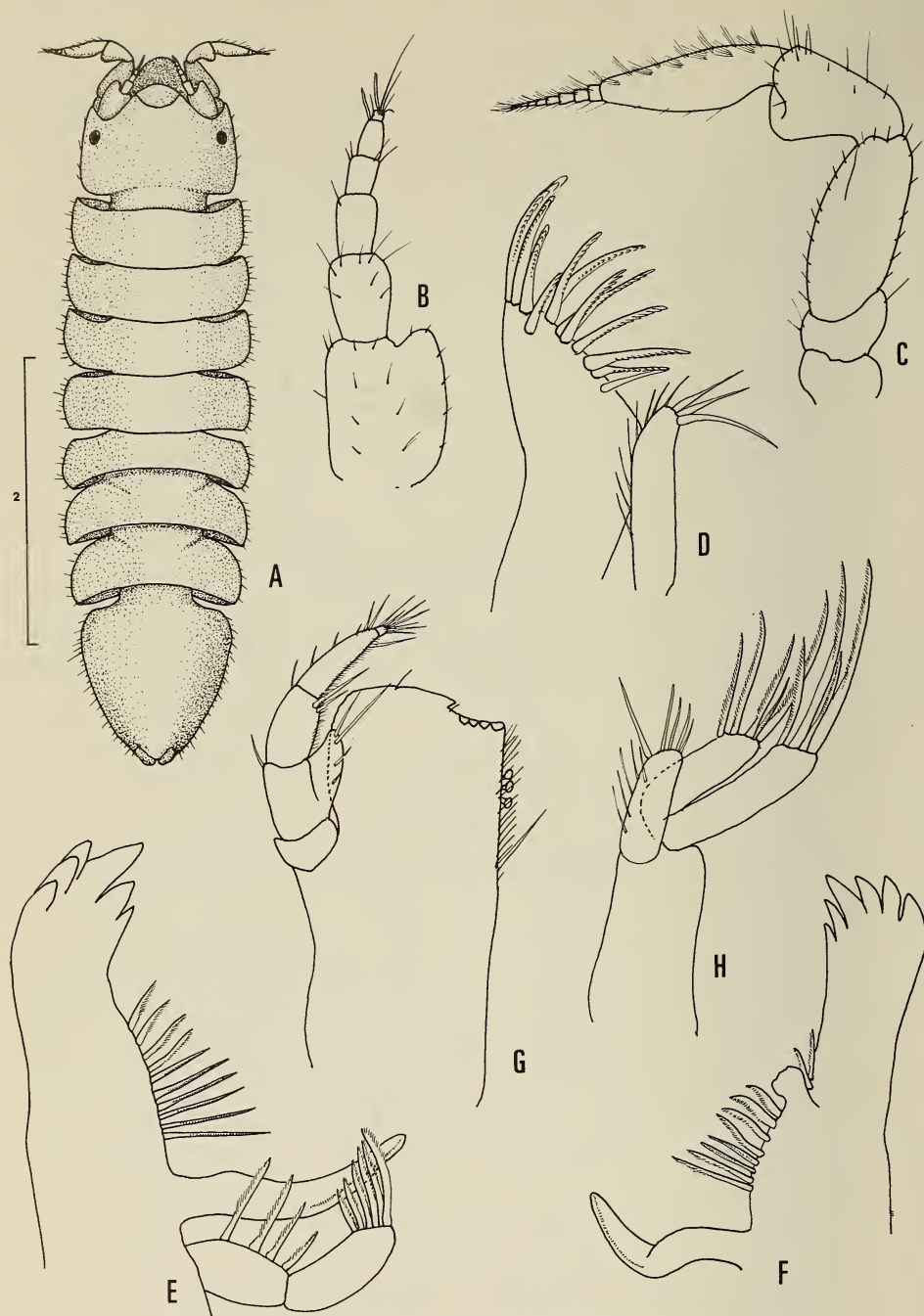


Fig. 5. *Jaeropsis paulensis* Vanhöffen

A. ♂ in dorsal view. B. Antennule. C. Antenna. D. 1st maxilla. E. Mandible.
F. Mandible. G. Maxilliped. H. 2nd maxilla.

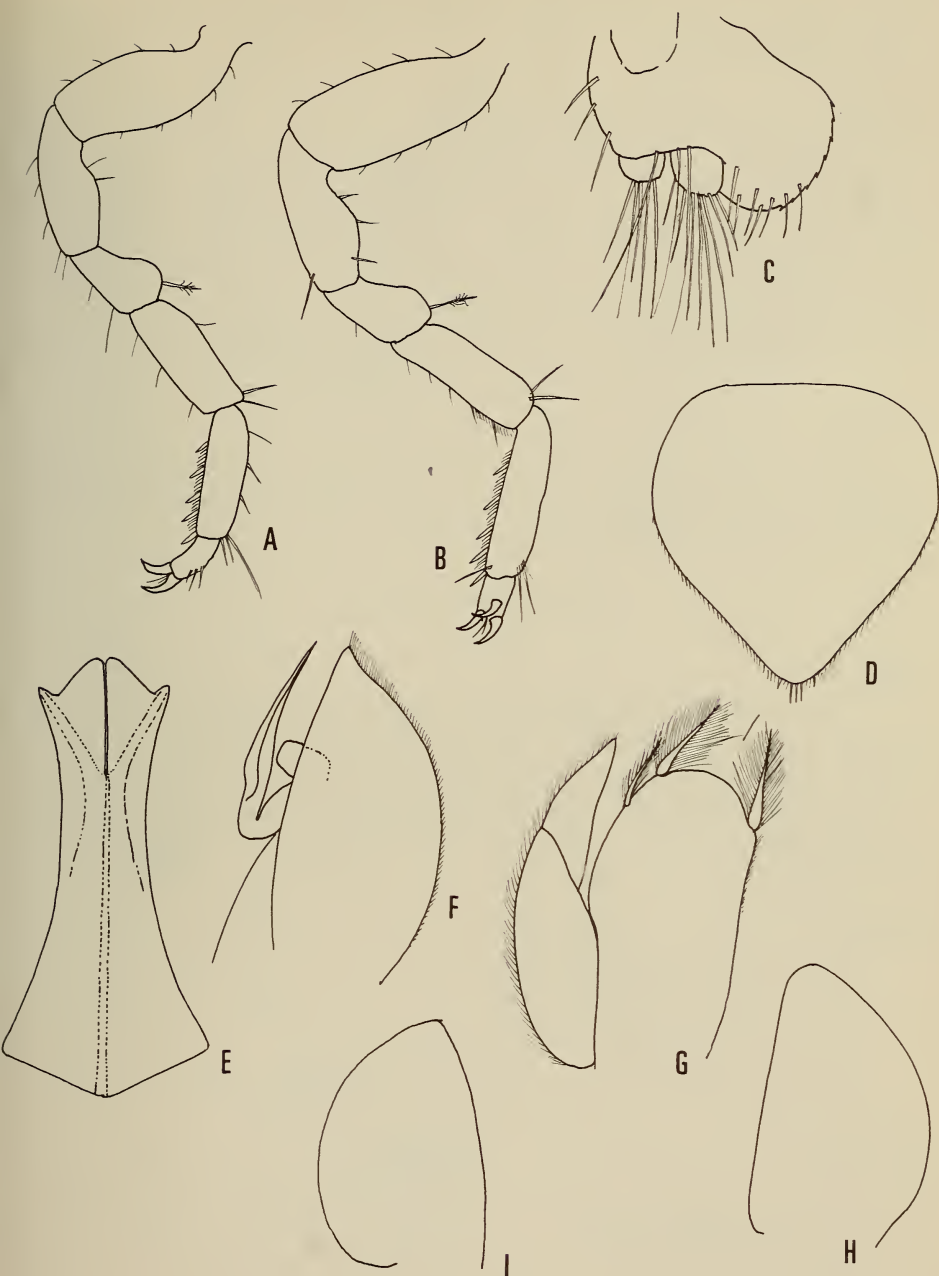


Fig. 6. *Jaeropsis paulensis* Vanhöffen

A. 1st peraeopod. B. VIIth peraeopod. C. Uropod. D. Operculum, ♀. E. 1st pleopod, ♂.
F. 2nd pleopod, ♂. G. 3rd pleopod, ♂. H. 4th pleopod, ♂. I. 5th pleopod, ♂.

setae. Uropodal basis with broadly rounded lobe medially, unarmed, medio-distal margin serrulate.

Material

SAM-A12285, Gough Island, 2 ♀♀ 1 ♂.

St Paul Island

Station No.

8a. 1 ovig. ♀, 5 ♀♀, 14 ♂♂

8b. 2 ovig. ♀♀, 1 ♀, 3 ♂♂

8c. 2 ovig. ♀♀, 3 ♀♀, 9 ♂♂

93. 4 ovig. ♀♀, 2 ♀♀, 7 ♂♂

Amsterdam Island

Station No.

a4. 8 ovig. ♀♀, 9 ♂♂

a8. 2 ♀♀

a9. 1 ♂

b3. ovig. ♀♀, 6 ♀♀, 3 ♂♂

14. 1 ovig. ♂, 2 ♀♀, 2 ♂♂

27/3/1970/b. 1 ♂

Remarks

Barnard (1965) remarks that Vanhöffen figures the maxillipedal palp displaced, and with the second segment unlobed. Figure 5G above shows that in fact this segment is lobed on the inner margin.

Jaeropsis beuroisi sp. n.

Figs 7-8

Diagnosis

Cephalon with frontal plate obtusely angled, lateral margins with four or five spinules, more noticeable in smaller specimens, often lacking in adults. Lateral margins of pleotelson in male with one or two small serrations, in female with five or six serrations. Uropodal basis longer than wide, with medial lobe extending furthest distally, tipped with tiny hook; uropods extending beyond pleotelsonic apex.

Material

Holotype ♂ 6,0 mm St Paul st.90.

Allotype ♀ 4,2 mm St Paul st.20.

Paratypes 12 ovig. ♀♀, 5 ♀♀, 22 ♂♂. St Paul 22a.

Paratypes 3 ovig. ♀♀, 5 ♀♀, 5 ♂♂. Amsterdam Island st.28.

St Paul Island

Station No.

3. 2 ♀♀, 1 ♂

7b. 10 ovig. ♀♀, 13 ♀♀, 13 ♂♂

18. 4 ovig. ♀♀, 3 ♀♀, 5 ♂♂

20. 1 ovig. ♀, 1 ♀, 1 ♂

22c. 9 ovig. ♀♀, 4 ♀♀, 12 ♂♂

77a. 1 ovig. ♀, 1 ♀, 4 ♂♂

90. 20 ♀♀, 18 ♂♂

Amsterdam Island

Station No.

39. 1 ovig. ♀, 1 ♀

41a. 1 ♀, 1 ♂

41b. 1 ♂

44. 1 ♀

64a. 1 ovig. ♀, 1 ♂

74. 4 ♂♂

94. 2 ♂♂

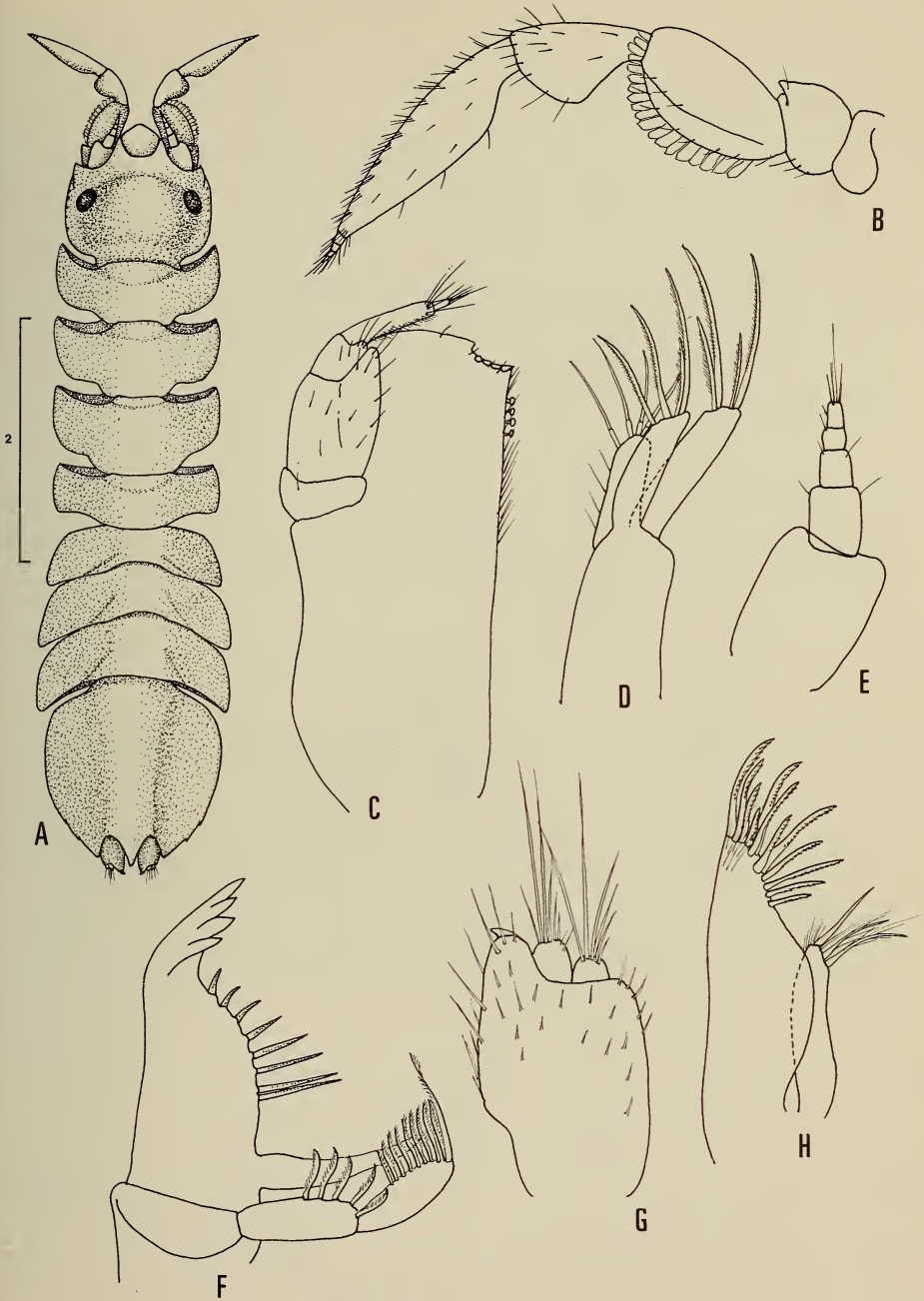


Fig. 7. *Jaeropsis beuroisi* sp. n.

A. Holotype in dorsal view. B. Antenna. C. Maxilliped. D. 2nd maxilla. E. Antennule.
F. Mandible. G. Uropod. H. 1st maxilla.

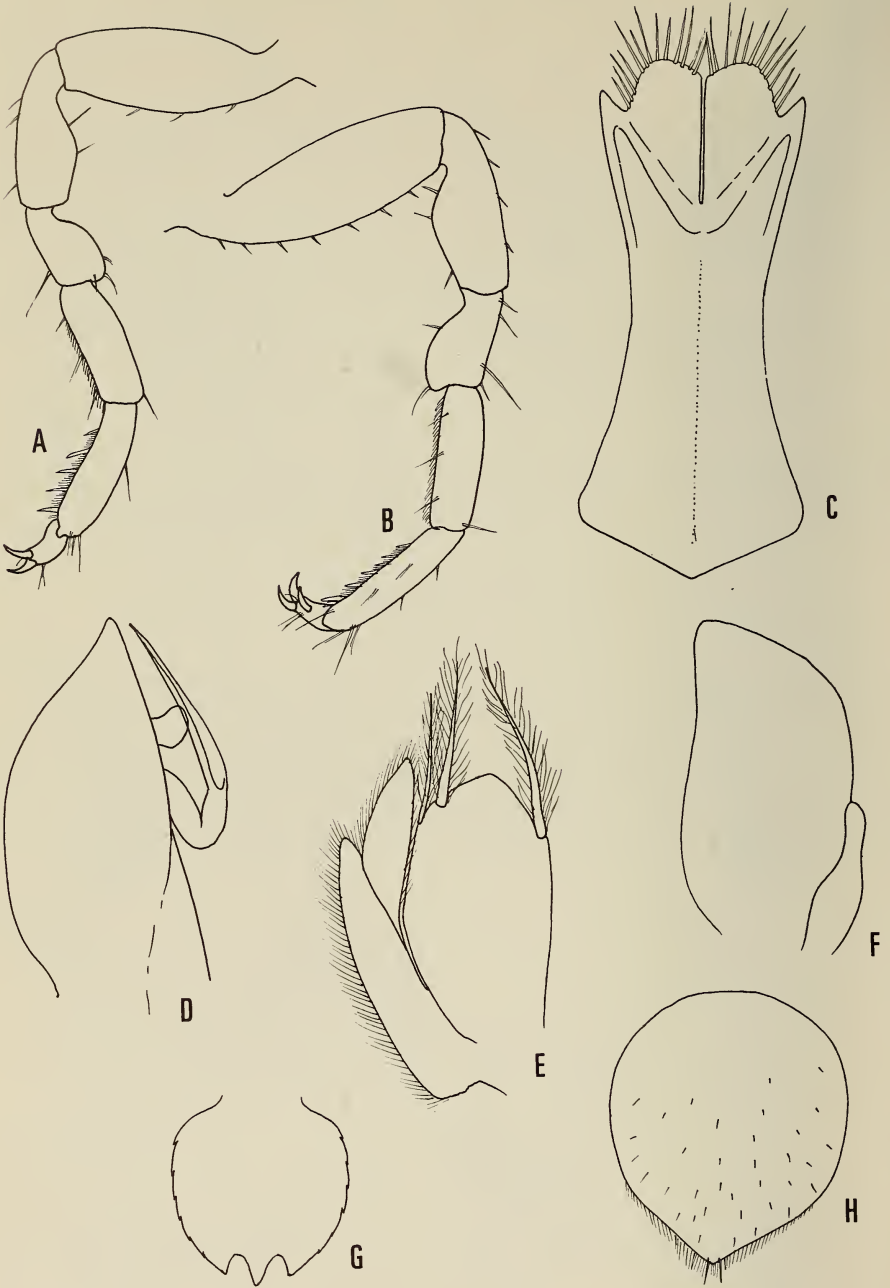


Fig. 8. *Jaeropsis beuroisi* sp. n.

- A. 1st peraeopod. B. VIIth peraeopod. C. 1st pleopod, ♂. D. 2nd pleopod, ♂.
E. 3rd pleopod, ♂. F. 4th pleopod, ♂. G. Pleotelson. H. Operculum, ♀.